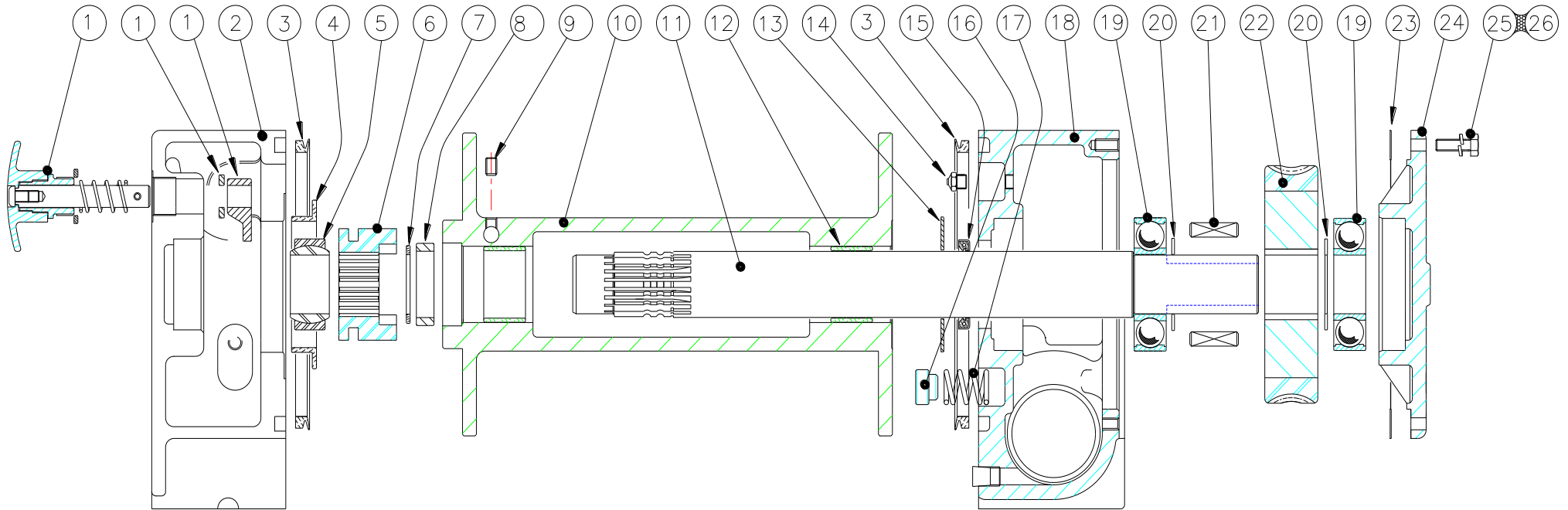
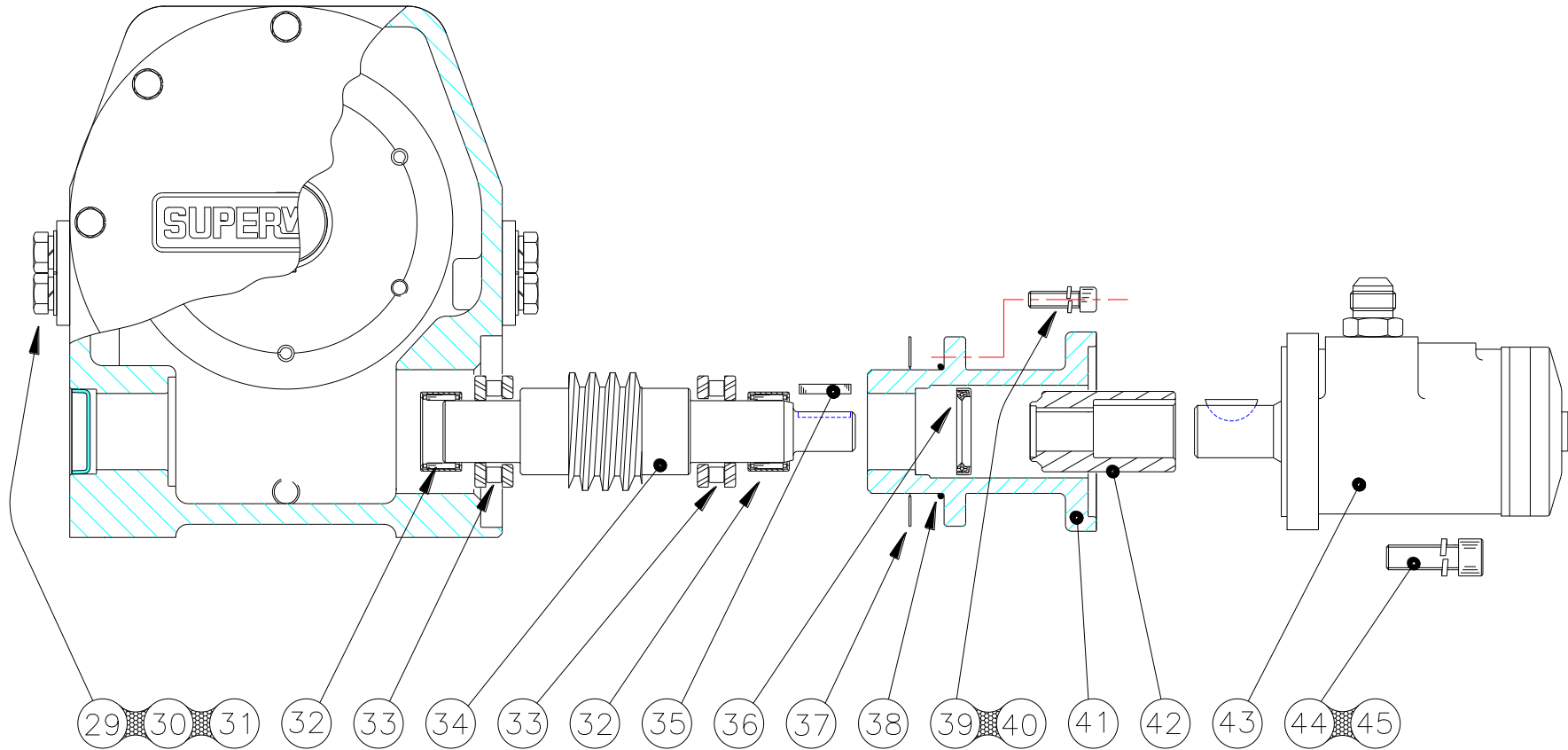


Superwinch H14W Exploded View and Parts



Item:	Description:	Part No:	Qty:	Item:	Description:	Part No:	Qty:
1	Freespool Assembly.	70-90008	1	14	Relief Valve.	70-90561	1
2	Clutch Housing.	70-25049	1	15	Oil Seal.	4-22-4560083	1
3	Face Seal.	4-22-180204143	2	16	Brake Shoe.	317	2
4	Flange Bearing.	10049	1	17	Brake Spring.	320	2
5	Spherical Plain Bearing.	4-99-04006228	1	18	Wormbox.	70-25009	1
6	Sliding Dog.	70-50034	1	19	Ball Bearing.	4-13-040090233	2
7	Circlip.	4-24-4556183	1	20	Thrust Washer	4-03-4060103	2
8	Spacer.	70-50081	1	21	Key.	557	2
9	Skt Hd Set Screw, M8 X 12.	4-40-081203	1	22	WormWheel / Worm Set.	70-95020	1
10	Rope Drum Assembly.	70-90006	1	23	Gasket.	70-60011	1
11	Driveshaft.	70-50032	1	24	Wormbox Cover.	70-25010	1
12	Plain Bearing, (Must be ordered with Drum).	4-62-4550303	2	25	Hex Set Screw, M8 X 25.	4-32-0802522	8
13	Drum Spacer.	70-60012	1	26	Spring Washer, M8.	4-51-0823	8

Superwinch H14W Exploded View Gear assembly



Item	Description:	Part No:	Qty	Item	Description:	Part No:	Qty
29	Tie Bar.	70-52146	2	38	'O' Ring.	4-21-05963	1
30	Hex Hd SetScrew, M10 X 25.	4-32-1002522	8	39	Cap Hd Screw, M8 X 25.	4-36-0802522	4
31	Spring Washer, M10	4-51-1023	8	40	Spring Washer, M8.	4-51-0823	4
32	Needle Roller Bearing.	4-12-30372013	2	41	Drive Adaptor.	70-90545	1
33	Thrust Washer.	4-09-3052163	2	42	Drive Coupling.	70-90009	1
34	Worm / Wormwheel Set.	70-95020	1	43	Hydraulic Motor.	94-32192-01	1
35	Key.	128	1	44	Cap Hd Screw, M12 X 40.	4-36-1204022	2
36	Oil Seal.	4-22-3042073	1	45	Spring Washer, M12.	4-51-1223	2
37	Gasket	70-60010	1				