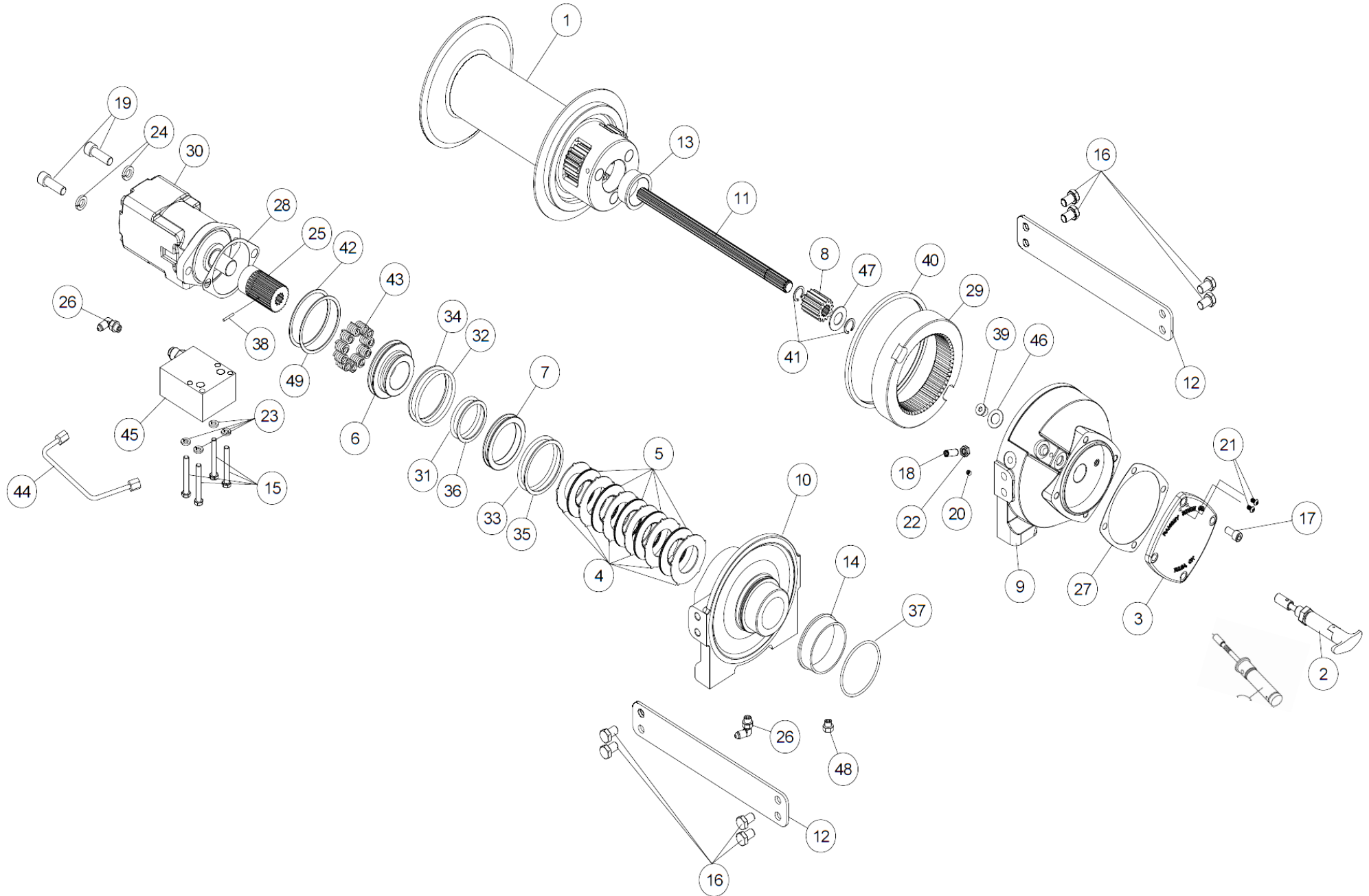


Ramsey HD-P10000



Ramsey HD-P10000 Air and Manual Freespool

Item No.	Quantity	Part No.	Description	Item No.	Quantity	Part No.	Description
1	1	234207	DRUM ASSY STD	27	1	442212	GASKET-GEAR HOUSING COVER
	1	234208	DRUM ASSY "Y"	28	1	442223	GASKET-MOTOR FLANGE
2	1	276058	AIR SHIFTER ASSY				
2	1	276048	SHIFTER ASSY	29	1	444084	GEAR-RING
3	1	328164	COVER-GEAR HOUSING	30	1	458079	MOTOR-HYD.
4	6	330011	STATOR-BRAKE	31	1	462067	O-RING PISTON-SM.
5	5	330012	DISC-BRAKE	32	1	462068	O-RING PISTON-LG.
6	1	330013	PISTON-BRAKE	33	1	462069	O-RING BACKUP PISTON
7	1	330014	PISTON-BACKUP BRAKE	34	1	462070	RING-BACKUP PISTON-LG
8	1	334174	GEAR-OUTPUT, SUN	35	1	462071	RING-BACKUP BACKUP PISTON
9	1	338327	END BEARING-GEAR HOUSING	36	1	462072	RING-BACKUP PISTON-SM
10	1	338358	END BEARING-MOTOR	37	1	462073	O-RING
11	1	357177	SHAFT-INPUT STD DRUM	38	1	470033	SPIROL PIN
		357176	SHAFT-INPUT "Y" DRUM	39	1	472052	PLUG
12	2	395427	PLATE-TIE STD DRUM	40	1	486080	SEAL
		395426	PLATE-TIE "Y" DRUM	41	2	490003	SNAP RING
13	1	412085	BUSHING-DRUM	42	1	490049	RING-INTERNAL RETAINING
14	1	412109	BUSHING-DRUM, MOTOR END	43	11	494124	SPRING-BRAKE
15	4	414159	CAPSCREW-5/16-18UNC X 2 1/2", HEX HEAD, ZINC, GR5	44	1	509132	TUBE-BRAKE RELEASE (PORTS DOWN)
16	8	414581	CAPSCREW-1/2-13NC X 3/4", HEX HEAD, ZINC, GR5			509131	TUBE-BRAKE RELEASE (PORTS UP)
17	4	414901	CAPSCREW-3/8-16NC X 3/4", HEX SOCKET HEAD	45	1	516041	VALVE-MOTOR CONTROL (A ROTATION)
18	1	414926	SETSCREW-3/8-16NC X 1", SOCKET HEAD, NYLON			516042	VALVE-MOTOR CONTROL (B ROTATION)
19	2	414954	CAPSCREW-1/2-13NC X 1 3/4", SOCKET HEAD, ZINC			516043	VALVE-MOTOR CONTROL SIDE PORTS (A ROT)
20	1	416016	SETSCREW-1/4-20NC X 1/4", HEX SOCKET HEAD CUP			516044	VALVE-MOTOR CONTROL SIDE PORTS (B ROT)
21	2	416239	SCREW-#10-24NC X 3/8", HEX SOCKET BUTTON HEAD			516013	VALVE-MOTOR CONTROL (DUAL CART.)
22	1	418036	NUT-3/8-16 NC, HEX JAM, ZINC	46	1	518037	THRUST WASHER
23	4	418163	LOCKWASHER-5/16 MED SECT, ZINC	47	1	518047	THRUST WASHER
24	2	418218	LOCKWASHER-1/2 ID MED SECT, ZINC	48	1	456038	BREATHER VENT
25	1	431020	COUPLING-MOTOR	49	1	490066	RING-INTERNAL RETAINING
26	2	432018	FITTING				