

RAMSEY WINCH

RPH 20,000



- Rated Line pull 20,000 lbs
- Meets SAE J706
- Recommended cable 9/16"
- Made in the USA

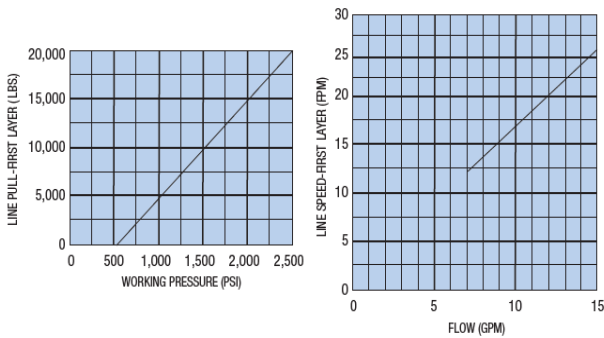


Applications

- Towing & Recovery
- Forestry
- Construction
- Petroleum
- Mining
- Refuse

Hydraulic Systems Performance

8.0 Cubic Inch Motor



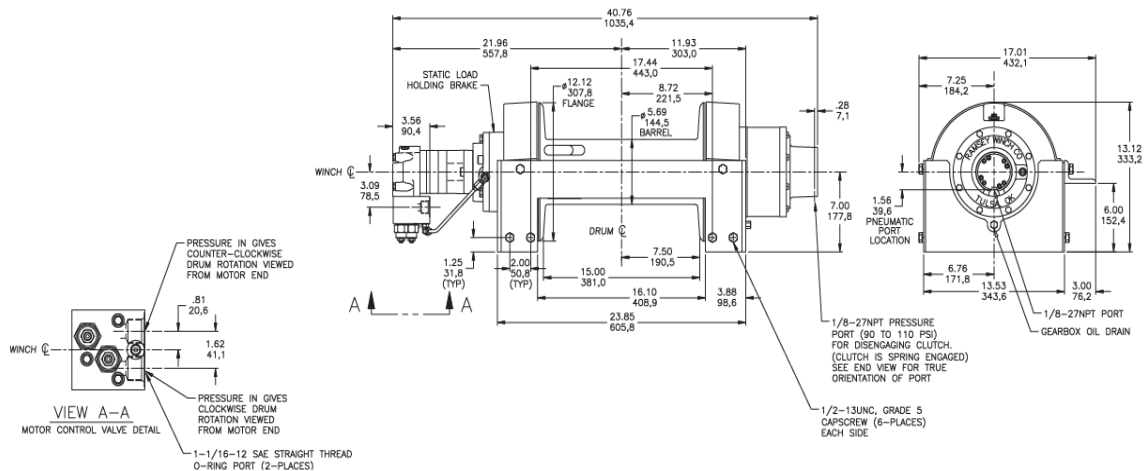
Specifications

Rated Line Pull	20,000 lbs.(9,070 kgs)
Gear Reduction25.53:1
Weight (without cable)375 lbs. (170 kgs)

LAYER OF CABLE		1	2	3	4	5
*RATED LINE PULL PER LAYER	Lbs. Kgs.	20,000 9,070	16,900 7,660	14,700 6,660	13,000 5,890	11,600 5,260
**CABLE CAPACITY	Ft. M.	35 10.0	85 25.0	135 41.0	195 59.0	265 80.0
LINE SPEED (at 15 GPM)	FPM (MPM)	26 (7.9)	30 (9.1)	35 (10.6)	39 (11.8)	44 (13.4)

* These specifications are based on recommended cable of 9/16" dia. EIPS cable.
** Last layer does not conform to SAE standard J706.

Winch Dimensions



DIMENSIONS SHOWN ARE INCHES OVER MILLIMETERS
WINCH MOUNTING CAPSCREWS MUST MEET OR EXCEED SAE GRADE 5 SPECIFICATION